

LOFT  
**B4**

SALES CONTACT: □

□

SAMIR PATEL, P.A. □

DOUGLAS ELLIMAN FLORIDA\* □

\* Independent Broker not □

associated with developer □

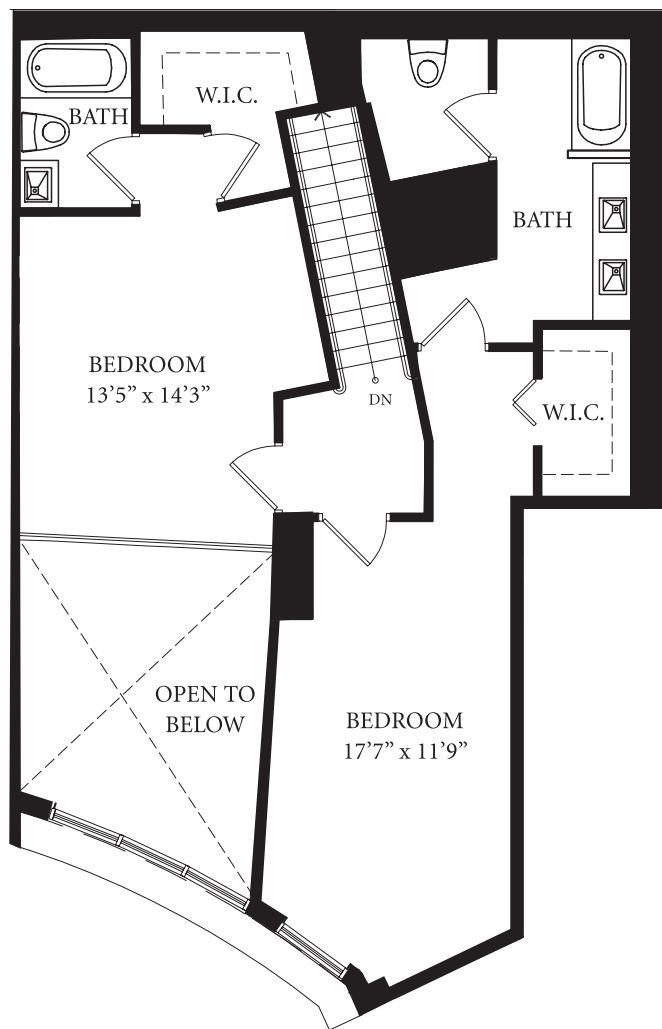
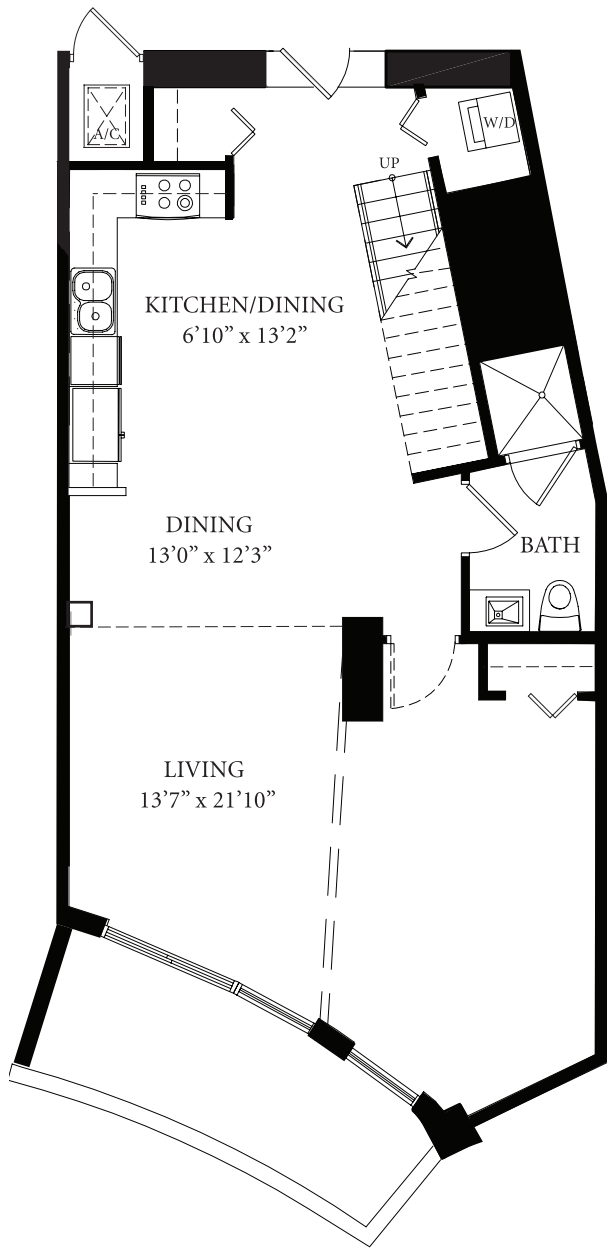
WWW.MIAMILOFTSANDCONDOS.COM □

SAMIR@MIAMILOFTSANDCONDOS.COM □

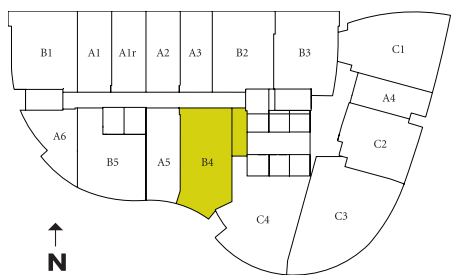
(305) 213-0336 - TELEPHONE □

(800) 381-9959 - TOLL FREE

lower . LEVEL



upper . LEVEL



**2 BEDROOM 3 BATH + DEN**

Living Area  
**2015 sq. ft. / 187.20 m<sup>2</sup>**

Balcony  
**109 sq. ft. / 10.12 m<sup>2</sup>**

Total Area  
**2124 sq. ft. / 197.32 m<sup>2</sup>**

Preliminary floorplan shown. All floorplans are currently under development. Accordingly, the size, dimensions, and layout of each residence are subject to architectural, structural and other changes as recommended by the architect, contractor, developer or as required by law. All dimensions are approximate and are subject to change in accordance with the purchase contract. Stated dimensions are measured to the exterior boundaries of the exterior walls and corridor walls and to the centerline of interior demising walls (and slab to slab for heights) and in fact may vary from the dimensions that would be determined by using the description of the condominium unit set forth in the Declaration of Condominium (which generally only includes the interior airspace between the perimeter walls and ceilings and excludes interior and structural components). The graphic materials, plans, specifications, dimensions, landscaping, walls, features, equipment, materials and statements are proposed only and the developer reserves the right to modify, revise or withdraw any of all of the same in its sole discretion and without prior notice. All improvements, design and construction are further subject to appropriate permits and approval. COPYRIGHT © 2006 BY INFINITY II AT BRICKELL, L.L.C., ALL RIGHTS RESERVED.