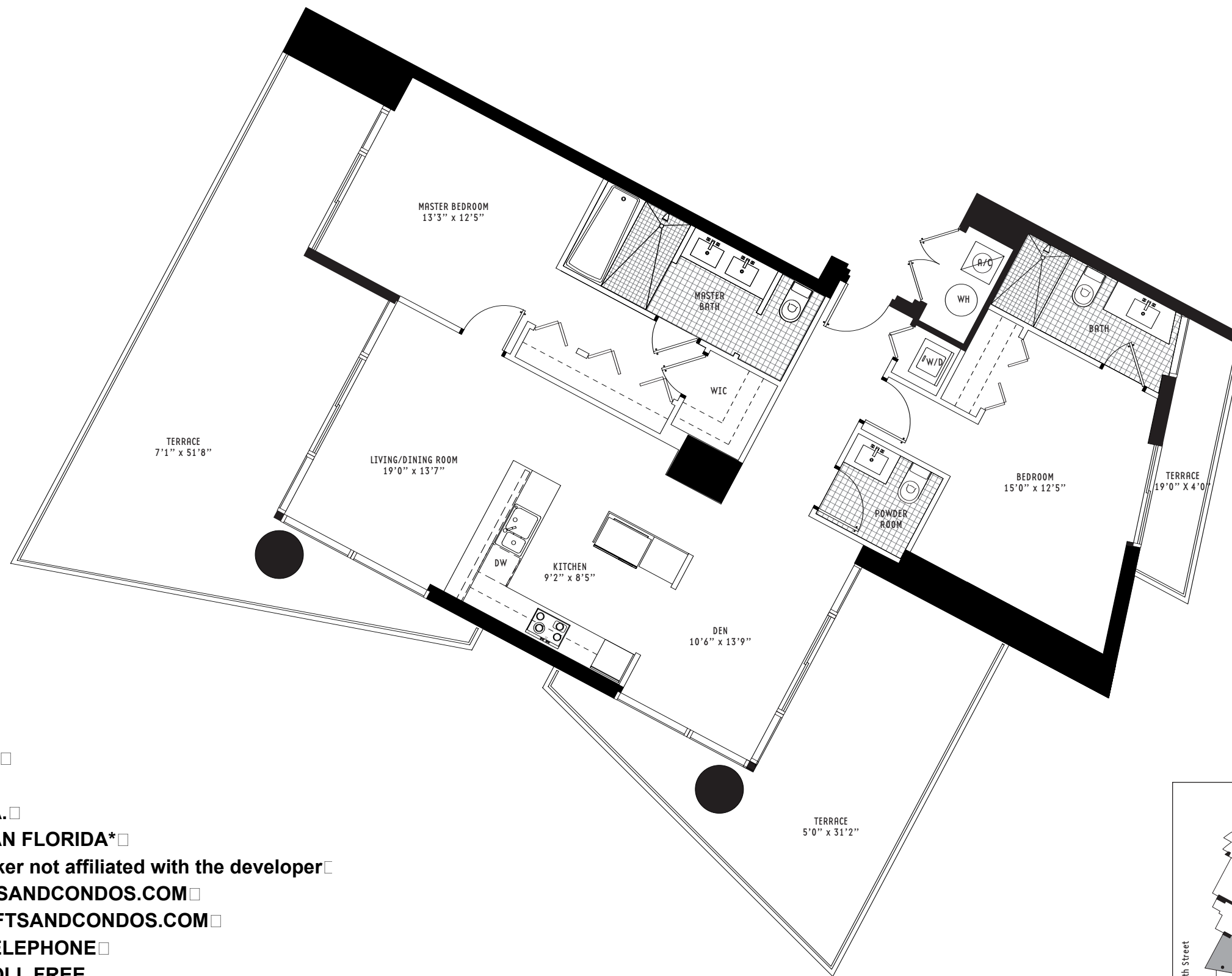
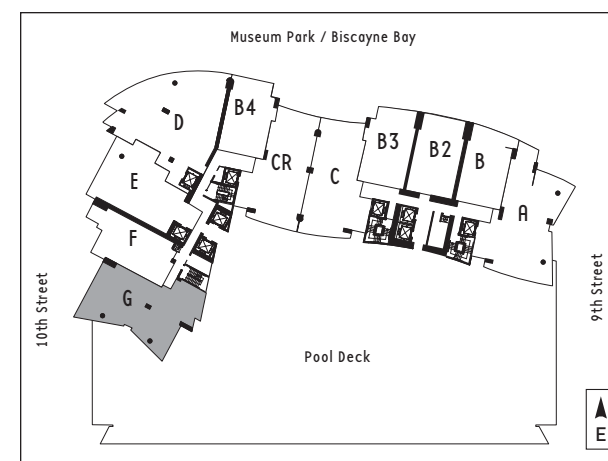


**G**



**SALES CONTACT:**

**SAMIR PATEL, P.A.**  
 **DOUGLAS ELLIMAN FLORIDA\***  
 \* Independent Broker not affiliated with the developer  
[WWW.MIAMILOFTSANDCONDOS.COM](http://WWW.MIAMILOFTSANDCONDOS.COM)  
[SAMIR@MIAMILLOFTSANDCONDOS.COM](mailto:SAMIR@MIAMILLOFTSANDCONDOS.COM)  
 (305) 213-0336 - TELEPHONE  
 (800) 381-9959 - TOLL FREE



**Unit G** 2 Bedroom + Den • 2.5 Bath

Interior	1,355 sq ft	125.88 m <sup>2</sup>
Terrace	597 sq ft	55.46 m <sup>2</sup>
Total area	1,952 sq ft	181.34 m <sup>2</sup>

All dimensions are approximate and all floor plans and development plans are subject to change by the developer without notice. Stated dimensions are measured to the exterior boundaries of the exterior walls and the centerline of interior demising walls and in fact vary from the dimensions that would be determined by using the description and definition of the "Unit" set forth in the Declaration (which generally only includes the interior airspace between the perimeter walls and excludes interior structural components).

**miamiloftsandcondos.com**  
Your #1 source for Miami Condos and Miami Lofts.

BISCAYNE

**900** BAY